



# EEC

EASTERN ECONOMIC CORRIDOR  
THE PRIME GATEWAY TO ASIA



# The starting point of EEC

The fast-moving progress of disruptive technology and the fluctuations in the global economy have brought about fundamental economic and societal changes.

---

**As the world transforms...  
Thailand has to adapt**

---

Thailand's challenge is to keep pace with technological changes.

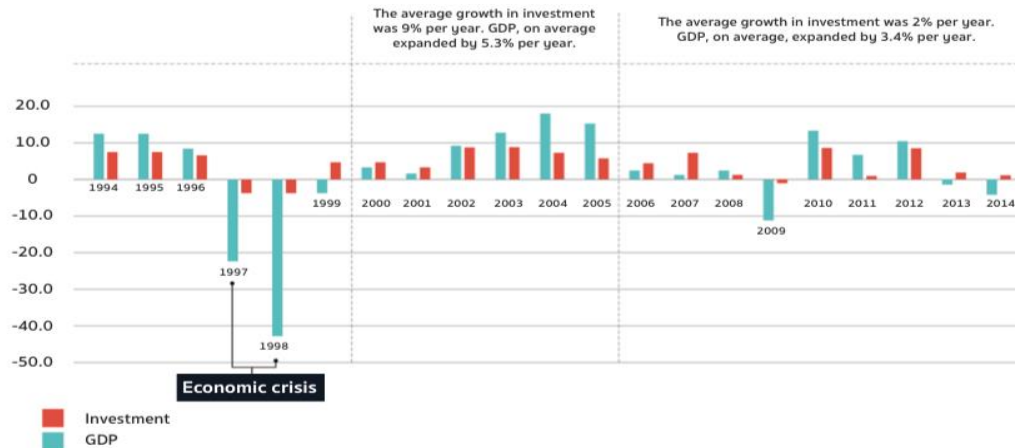




Thailand is currently facing  
**a low level of investment,**  
unable to keep pace  
with technological changes and  
**caught in the middle-income trap.**

During the past 10 years (from 2005-2014)

- Thailand experienced a low level of investment growth at **2%**.
- This resulted in a small growth of GDP (**2-3%**), which is lower than Thailand's potential (4-5%).
- Therefore, Thailand's level of competitiveness is unable to drive the country's economy towards the next phase.



As a result, Thailand must  
**boost the level of investment**  
in order to keep pace  
with technological changes and  
**escape the middle-income trap.**

From now on :

- Thailand must raise the investment **growth rate to 10%**.
- This will increase the country's GDP **growth rate to 4-5%**, which is the country's full potential.
- Thailand's competitiveness level will therefore help the country escape the middle-income trap and turn Thailand into a developed country by 2032.

In order to become a developed country by 2032,  
the Thai economy must expand  
by around 4-5% per year.



To achieve the goal, the targeted  
industries must be clearly determined  
and meet the following criteria:

- Demand driven
- Fundamental driven
- Technology driven

# 12 Targeted Industries

The mechanism that will drive the Thai economy with future technology.

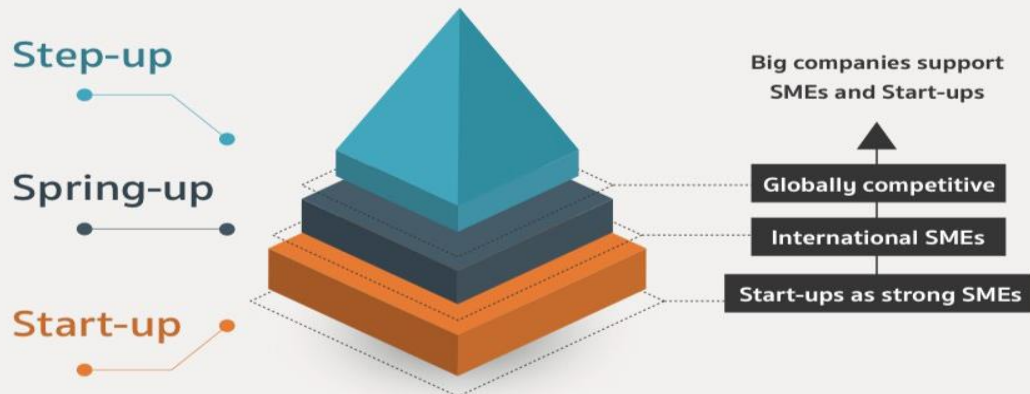
## Upgrading the First S-curve industries :



## Advancing the New S-curve industries :



Moving forward...without leaving anyone behind.



# The 4 special mechanisms that will speed up investment in the targeted industries :

## 1. Clearly-defined area :

The Eastern Seaboard was the first designated area as it is recognized by global investors. In addition, it is an important investment base for industrial estates in Thailand, with infrastructure to support development.

## 2. Public-Private Partnerships :

The government sets appropriate policies and development frameworks, while the private sectors make the investment.

## 3. Clearly-defined incentives :

Implement investment promotion measures, create an investment ecosystem, and designate special economic zones in order to quickly produce effective results.

## 4. The EEC Act and regulatory bodies :

The EEC Act and regulatory bodies are set up to support the continuity of EEC area development.

“  
This is the starting point of  
the Eastern Economic Corridor  
(EEC)  
”



# EEC's mission

Strengthening the Thai economy

## Modern infrastructure

- Physical infrastructure
  - Digital infrastructure
- 

## 12 Targeted industries

- 5 First S-curve industries
  - 7 New S-curve industries
- 

## New way of life

- Tourism
  - City development
- 

## Covered aspects

- Education/Health/Environment
- Basic public utilities/Community development



# Comprehensive Infrastructure

## The Enhancement of Investment Value



### High-Speed Rail Linking 3 Airports

→ less than an hour

Year of operation: 2023

The High-Speed Railways will provide fast and convenient journeys between 3 major international airports of Bangkok, namely Don Mueang Airport, Suvarnabhumi Airport, and U-Tapao Airport, with the velocity of 250 kilometers per hour. This system comprises of 9 high-speed stations namely Don Mueang, Bang Sue, Makkasan, Suvarnabhumi, Chachoengsao, Chonburi, Si Racha, Pattaya, and U-Tapao with the Transit Oriented Development (TOD) at Makkasan and Si Racha station.

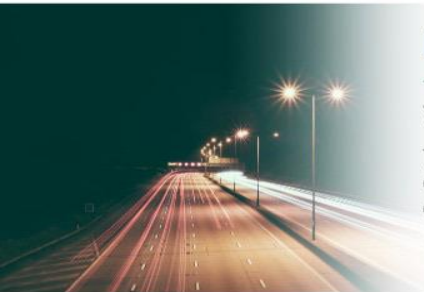


### U-Tapao International Airport

→ 60 million passengers/year

Year of operation: 2023

The existing U-Tapao International Airport will be renovated and extended into a greenfield development with a second runway and a world-class Terminal 3 as well as the commercial gateway, air cargo terminal, maintenance repair and overhaul service center (MRO), free trade zone, and aviation training center. The upgrading U-Tapao International Airport will serve as the third international airport of Bangkok and will be positioned as the regional aviation hub between EEC and major partners in Asia.



### Intercity Motorway

→ New network that connects all essence of EEC

Year of operation: 2019

The extended motorway No. 7 and others will not only save precious time on the road, but these intercity motorways will also reach to various unexplored destinations and will facilitate the greenfield investment within the EEC area.



### Double-Track Railway

→ Increase rail transportation in EEC

Year of operation: 2023

The new double track railway will pass through significant industrial areas and logistic centers, including Laem Chabang Port, Map Ta Phut Industrial Port, industrial zones nationwide and inland container depots. This will enhance on-time and cost-efficient delivery.



### Laem Chabang Port Phase 3

→ 18.1 million TEU/year

Year of operation: 2025

Located in Chonburi province, Laem Chabang Port will become one of the best seaports in the world using the automated system and advanced full-scale services. The construction will start in 2023 with an initial capacity of 4 million TEU/year.



### Map Ta Phut Industrial Port Phase 3

→ 31 million tonnes of gas and liquid cargo shipment/year

Year of operation: 2025

Located in the Map Ta Phut Industrial Estate in Rayong province, the phase 3 development will consist of two terminals, natural gas and liquid material, and the area development for related industries such as power plant and warehouse. The capacity of the Liquefied Natural Gas (LNG) terminal will be approximately 20 million tonnes/year, while the capacity of the liquid material terminal will be approximately 11 million tonnes/year.

## With these infrastructures, you will experience

- Reduction in time required for traveling
- Easier and more convenient connectivity
- A downward shift in logistics costs
- Greater capacity to absorb business and trades



# Complete Strategic Location

Creating an Inclusive Environment



# The continuous progress of the main infrastructure projects



## High-Speed Rail Linking 3 Airports

Cars: 2-3 hours → High-Speed Rail : less than an hour

**Year of operation : 2023**

Project Owner : State Railway of Thailand



## U-Tapao International Airport

3.7 million passengers/year → 60 million passengers/year

**Year of operation : 2023**

Project Owner : Royal Thai Navy



## MRO Facility at U-Tapao airport

The intelligent MRO Center providing aircraft parking for 7 airplanes (5 wide body and 2 narrow-body aircraft)

**Year of operation : 2022**

Project Owner : Thai Airways International PCL



## Map Ta Phut Industrial Port Phase 3

The capacity of gas and liquid cargo shipment will increase from 16 million tons/year → 31 million tons/year

**Year of operation: 2025**

Project owner : Industrial Estate Authority of Thailand



## Laem Chabang Port Phase 3

11.1 million TEU/year → 18.1 million TEU/year

**Year of operation : 2025**

Project owner : Port Authority of Thailand



## Intercity Motorway

Reducing traffic congestion and increasing connectivity between cities

**Year of operation : 2020**

Project owner : Ministry of Transport



# EASTERN ECONOMIC CORRIDOR ACT B.E. 2561 of Thailand

## Key principles of “EEC Act” are...



(Unofficial translation)

A

### Permanent Administration

- **Policy Committee** (28 persons) chaired by PM, includes 14 Ministers, Budget Bureau, NESDB, BOI<sup>1)</sup>, Board of Trade, FTI<sup>2)</sup>, TBA<sup>3)</sup>, and external experts
- **Secretary-General** and **EEC Office**

B

### Clear Working Process

- **One-stop Service** (OSS), EIA, PPP, Urban planning, and etc.
- **Special Economic Promotional Zone**
- **Incentives** (tax, visa / work permit and etc.)

C

### EEC Inclusivity

- **Integrated Plan** and **Budget Fund** for local development

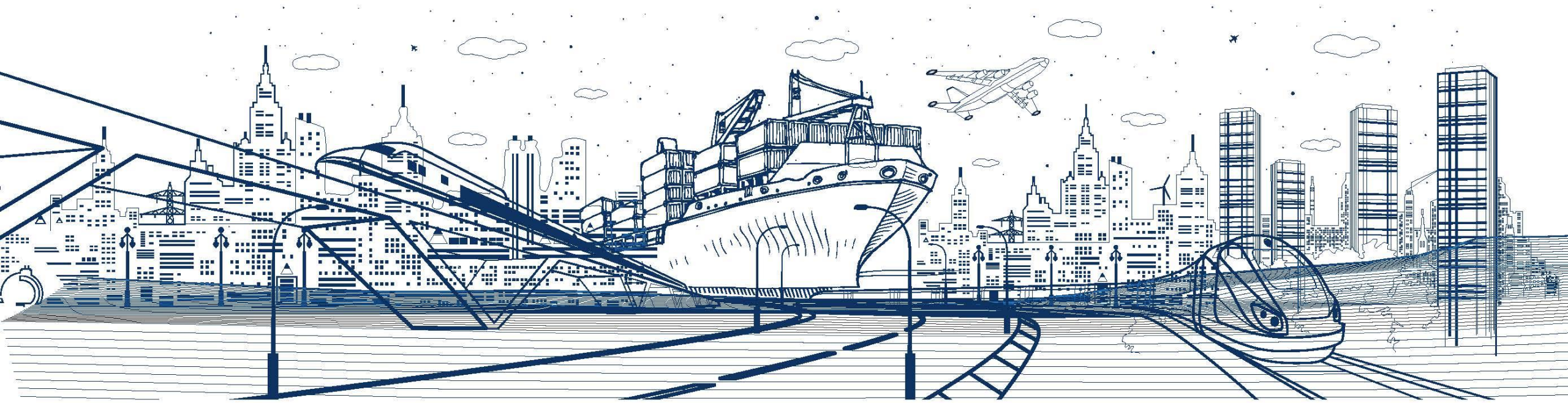
Note: 1) Board of Investment; 2) Federation of Thai Industries; 3) Thai Bankers' Association



EEC

EASTERN ECONOMIC CORRIDOR  
THE PRIME GATEWAY TO ASIA

# Targeted Industries and Investment





# 12 Targeted Industries

## Promoting Advanced Technology And Innovation



### Next-generation Automotive

For decades, Thailand has been recognized as Asia's leading automotive manufacturer. To build upon the existing capabilities, EEC, therefore, places great importance on energy-efficient and electric vehicles (EV).



### Intelligent Electronics

The electronic-parts export is another essential pillar for the Thai economy. Based on the country's competency, technological integrations, and complicated integrated circuits industry, and electronic related industry will develop its momentum.



### Advanced Agriculture and Biotechnology

With strong agricultural fundamental, EEC has adopted a strong promotional stance to elevate the capacity of agricultural industries. The enrichment will focus on the incorporation of advanced agricultural technologies and biotechnology adaptation.



### Aviation and Logistics

Future air traffic growth will center around Asia. Thailand, as a prime geographic location with industrial expertise, can leverage to achieve a quick win in the aviation business. EEC primarily focuses on the development of MRO center in U- Tapao Airport and Tier 2 to 4 aerospace industries.



### Medical and Comprehensive Healthcare

Endowed with a strong foundation in medical tourism, Thailand has the potential to be the first-rated 'medical hub' with a comprehensive healthcare and medical science industry development.



### Biofuel and Biochemical

Thailand is a major player in ethanol production, sugarcane, and oil palm industry. This will serve as a bridge between the current and future establishment of chemical industry, technological R&D of the third-generation biofuels, and new biochemical products.



### Food for the Future

Thailand has a worldwide recognition as the Kitchen of the World. Thailand has put forward its own advantageous position to adopt biotechnological application and serve demand for better safety standards, food origins, and veganism.



### High-value and Medical Tourism

Thailand is the most favorite tourist destination and a leading medical tourism in Southeast Asia. Eco-tourism, medical & wellness tourism and business-leisure tourism will be promoted in the EEC.



### Automation and Robotics

Thailand is leveraging its automotive and electronics industries to promote robotics production and automated system application that will provide a better business solution to both domestic and international corporations.



### Digital

Investment opportunities in the digital industry are abundant in various sectors such as e-commerce, IoT, digital content and cloud computing among others. Some of our ambitious projects, such as the development of EEC Smart City and Digital Park, are ensuring achievement and continuity of development.



### Defense

This newly targeted industry aims to increase the efficiency of Thai military activities and supply of domestic military forces, focusing on R&D and production of military devices and vehicles, and MRO business.



### Education and Human Resource Development

EEC encourages collaboration between various educational organization both domestically and internationally including vocational schools, universities, and private companies to develop the educational curriculum that meets the future demands and the international standards.

# Promoted Zones For **Specific Industries**

Investors will be eligible to receive both tax and non-tax privileges from investing in these Promoted Zones for Specific Industries



## EECh, High-Speed Rail Ribbon Sprawl

Location: Along the high-speed rail track that crosses Don Mueang, Suvarnabhumi, and U-Tapao Airport | Distance: 220 kilometers

EECh consists a High-Speed Railway and the Transit-Oriented Development area (TOD), located at the Makkasan and Si Racha station, measuring 140 Rai (22.4 Hectares) and 25 Rai (4 Hectares), respectively.

## EECd, Digital Park

Location: Si Racha District, Chonburi Province | Area: 708 Rai (113.28 Hectares)

EECd is the future destination for digital global players and digital biz innovators to explore, develop, and acquire original digital technology for thriving digital business. It consists of the world-class data center, digital innovation testbed and IoT institutes which are fully equipped with high-tech facilities.

## EECmd, Medical Hub

Location: Bang Lamung District, Chonburi |

Area: 566 Rai

EECmd is projected to be Thailand's first medical hub, where the area would offer complete health care and medical services. EECmd aims to elevate Thailand's health services and equip the country for the expansion of its aging population.

## EECi, Innovation Platform

Location: Wangchan Valley, Rayong Province | Area: 3,000 Rai (480 Hectares)

EECi is a novel ecosystem designed to promote innovation and upgrade modern technology that will serve future business needs. A complete "innovation ecosystem" will transform technological and innovation research into practical industrial applications.

## EECa, Eastern Airport City

Location: U-Tapao International Airport, Rayong Province | Area: 6,500 Rai (1,040 Hectares)

EECa consists of business and facilities in the U-Tapao International Airport, including a commercial gateway, a cargo terminal, an aviation training center, an MRO center, and Free Trade Zone that will enhance business operations and provide a world-class experience for everyone.



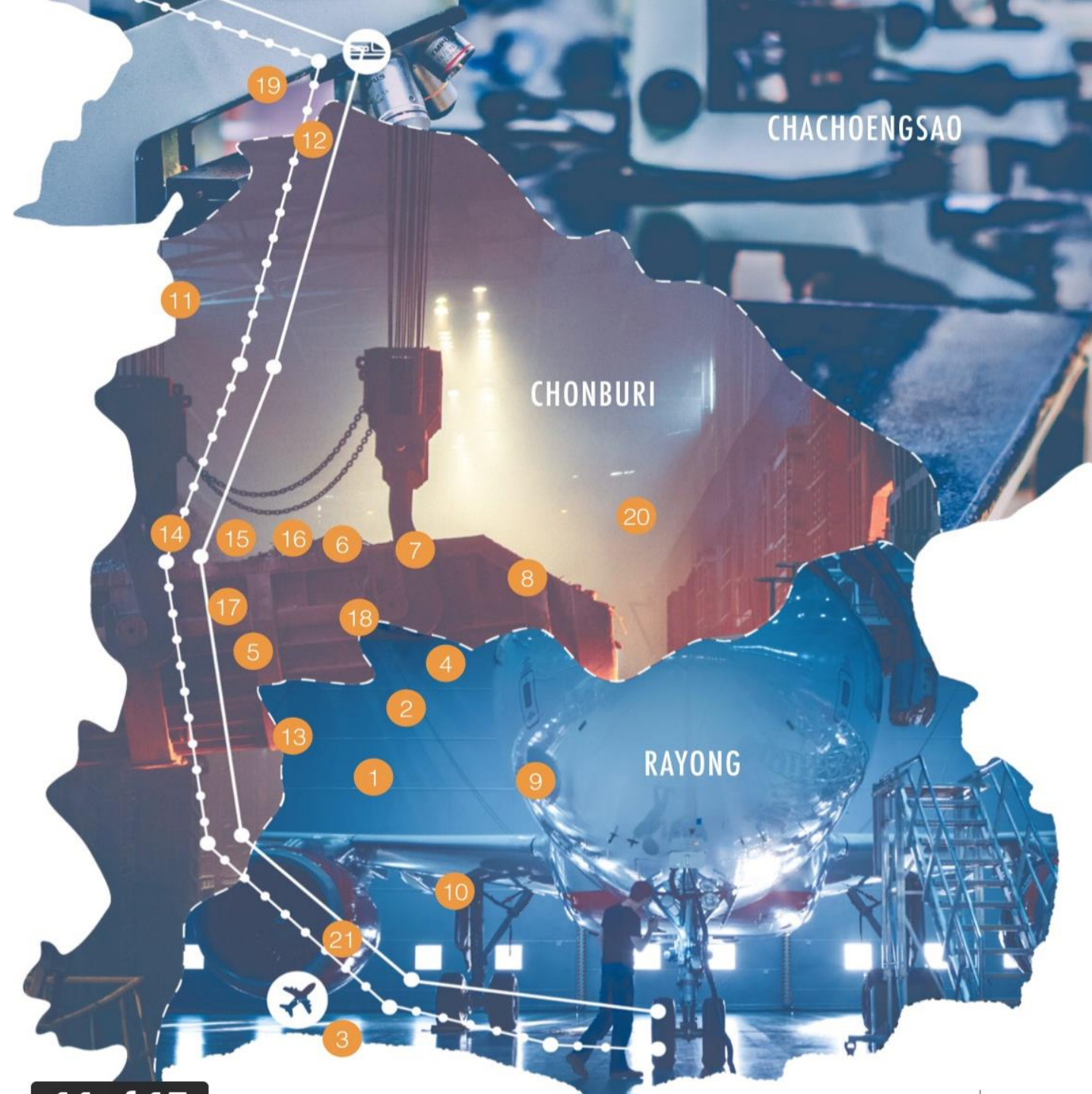


# Promoted Zones For Targeted Industries

The EEC has designated 21 Promoted Zones to be a location for the 12 targeted industries. Investors will be eligible to receive both tax and non-tax privileges.

## List of Promoted Zones for Targeted Industries

- 1 WHA Rayong Industrial Estate
- 2 Eastern Seaboard (Rayong)
- 3 WHA Eastern Industrial Estate (Map Ta Phut)
- 4 WHA Eastern Seaboard I.E.1
- 5 WHA Chonburi I.E.1
- 6 WHA Chonburi I.E.2
- 7 WHA Eastern Seaboard I.E.2
- 8 WHA Eastern Seaboard I.E.3
- 9 WHA Eastern Seaboard I.E.4
- 10 CP (Rayong)
- 11 Amata Nakorn Industrial Estate
- 12 Amata Nakorn Industrial Estate (2nd Project)
- 13 Amata City
- 14 Pinthong
- 15 Pinthong Industrial Estate (Laem Chabang)
- 16 Pinthong Industrial Estate (3rd Project)
- 17 Pinthong Industrial Estate (4th Project)
- 18 Pinthong Industrial Estate (5th Project)
- 19 TFD (2nd Project)
- 20 Yamato Industries
- 21 Smart Park



## Investment incentives package for investment projects in the Eastern Economic Corridor (2020-2021)

Key features	Investment Incentives	Targeted activities			
		Section 8	A1	A2	A3
1. Standard tax package	Tax holidays	10 years (no cap)	8 years (no cap)	8 years	5 years
Human resource development programs (additional tax incentives)					
2. Investments projects which are engaged in human resource development programs	Tax holidays	2 years (no cap)	-	-	-
	50% reduction of CIT	-	3 years	3 years	3 years
Projects located in the four promoted zones for specific industries (EECi, EECd, EECa and EECmd) OR industrial estates and promoted industrial parks					
3. Investments located in EECi, EECd, EECa and EECmd	Tax holidays	1 year (no cap)	-	-	-
	50% reduction of CIT	-	2 years	2 years	2 years
OR					
Investments located in industrial estates and promoted industrial parks.	Tax holidays	1 year (no cap)	-	-	1 years
	50% reduction of CIT	-	-	-	-

### Remarks:

A1 : Knowledge-based activities focusing on R&D and design to enhance the country's competitiveness.

A2 : Infrastructure activities for the country's development, activities using advanced technology to create value-added, with no or very few existing investments in Thailand.

A3 : High technology activities which are important to the development of the country, with a few investments already existing in Thailand.

Section 8 : Technology and Innovation Development includes targeted core technology development such as development of biotechnology, nanotechnology, advanced materials technology and digital technology.





## Additional Privileges

In addition to our generous tax incentives, EEC also provides other privileges for investors and overseas professionals who plan to work in the EEC.

### Personal Income Tax

- Foreign staffs in the Promoted zones are subjected to 17% personal income tax. This offer also applies to their parents, spouse, and children.
- Foreign executives working at their headquarters or international trading companies in the EEC are subjected to 15% personal income tax.

### Import Duties

- Exemption of import duties on machinery.
- Exemption of import duties on raw materials for production and R&D.

### Financial Transaction

- Business operators are exempted from the Law on Foreign Currency Exchange Control and can use foreign currencies in the Promoted Zones.

### Land and Real Estate Ownership

- Foreign entities can own land and properties for their business operation.
- Foreign entities are also allowed to own properties for residential purpose.
- Foreign entities are entitled to enter into lease/sublease/lease-out contract of land or real estate within the Promoted Zones for 50 years and renew upon approval for 49 years.

### Immigrating to and Residing in Thailand

- Foreign experts/executives/specialists, including their spouses and dependent persons, can enter and reside in the Kingdom of Thailand for a specific period which extends beyond what is stipulated in the Immigration Law.

### Special Deductions

- Tax deductions at a triple amount of the R&D expenses will be granted for R&D on technology and innovations.
- Targeted industries that are new to Thailand or use high technology in manufacturing will be entitled to incentives under the Competitiveness Enhancement Act.

### Other Privileges

- Business operators in the Promoted Zones are entitled to the same privileges as business operators in the Duty-Free Zone/ Bonded Warehouse/Free Zone.
- Professional are entitled to obtain license, registration, or certificates to practice their professions for business operations in the Promoted Zones.



# EEC-OSS

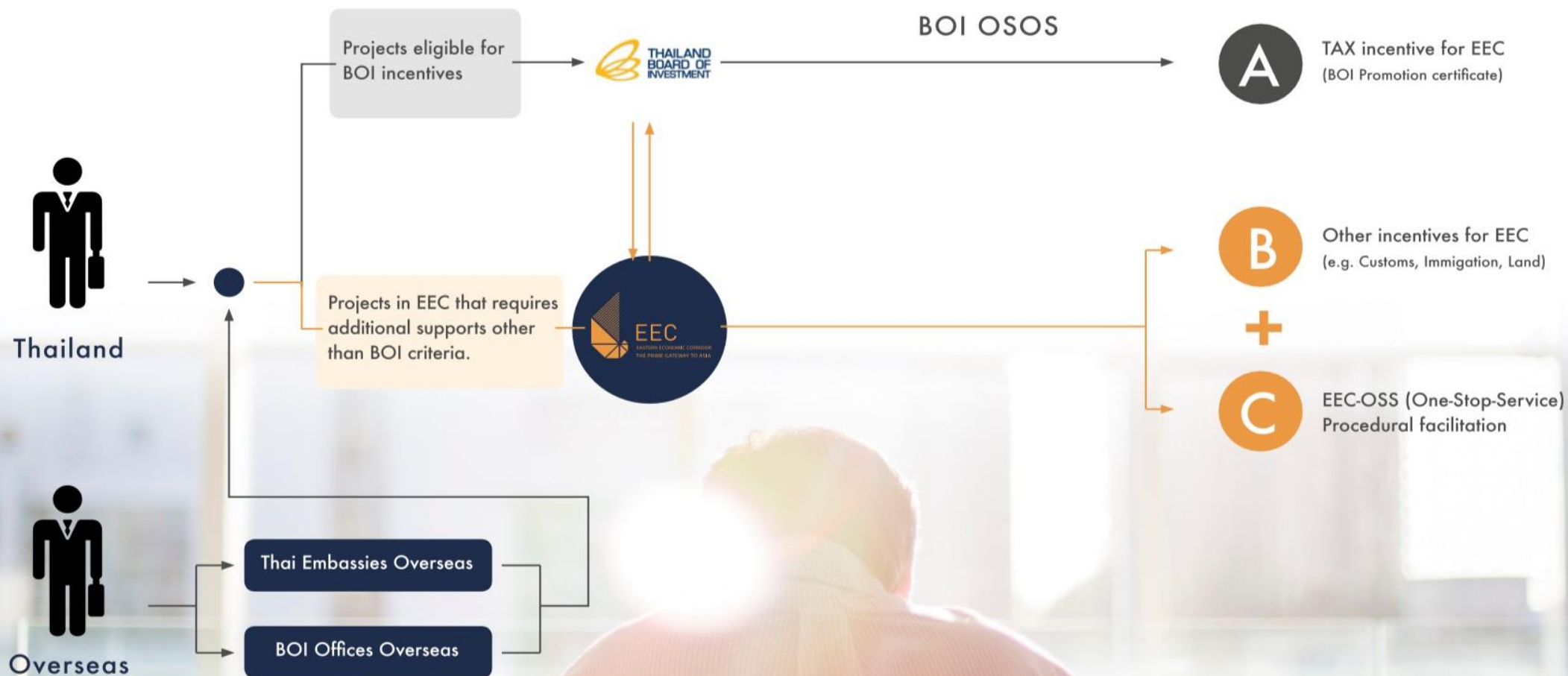
## Your Sincere Supporter, Your Partner in Thailand

In accordance with the EEC act, the EEC's One-Stop Service holds the equivalent power and authority as the related government agencies to approve, permit, grant the rights and concessions under 8 related laws.





# Steps to Successful Investment Journey



# Value of investment in EEC

From both the government  
and the private sector

**\$ 49,900 million**  
in the first 5 years (estimated)



## Modern infrastructure

- Physical infrastructure
- Digital infrastructure

## 12 Targeted industries

- 5 First S-curve industries
- 7 New S-curve industries

## New way of life

- Tourism
- City development

## Covered aspects

- Education/Health/Environment
- Basic public utilities/Community development





EEC

EASTERN ECONOMIC CORRIDOR  
THE PRIME GATEWAY TO ASIA

# Promoted Zones for Targeted Industries



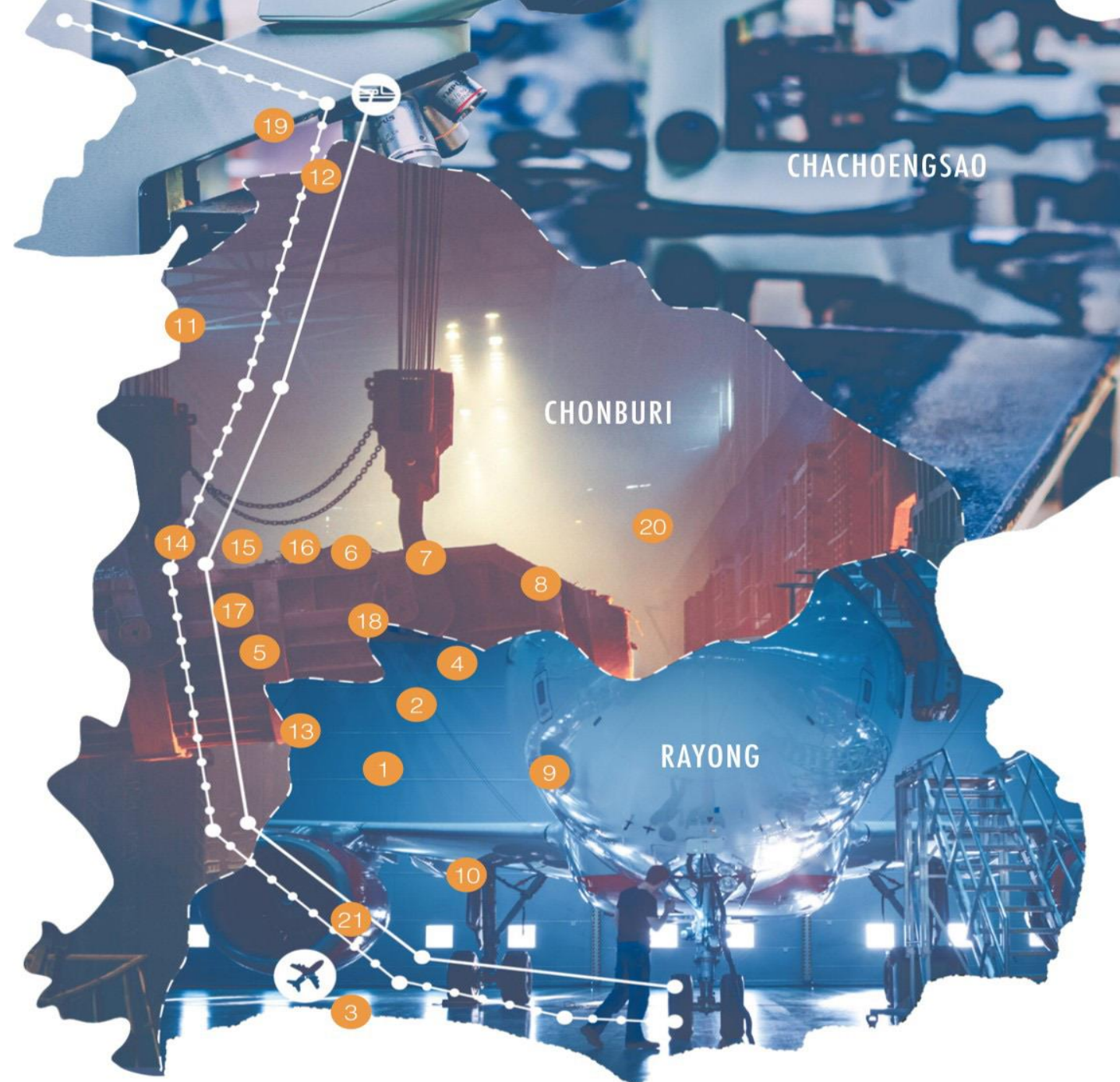


# Promoted Zones For Targeted Industries

The EEC has designated 21 Promoted Zones to be a location for the 12 targeted industries. Investors will be eligible to receive both tax and non-tax privileges.

## List of Promoted Zones for Targeted Industries

- 1 WHA Rayong Industrial Estate
- 2 Eastern Seaboard (Rayong)
- 3 WHA Eastern Industrial Estate (Map Ta Phut)
- 4 WHA Eastern Seaboard I.E.1
- 5 WHA Chonburi I.E.1
- 6 WHA Chonburi I.E.2
- 7 WHA Eastern Seaboard I.E.2
- 8 WHA Eastern Seaboard I.E.3
- 9 WHA Eastern Seaboard I.E.4
- 10 CP (Rayong)
- 11 Amata Nakorn Industrial Estate
- 12 Amata Nakorn Industrial Estate (2nd Project)
- 13 Amata City
- 14 Pinthong
- 15 Pinthong Industrial Estate (Laem Chabang)
- 16 Pinthong Industrial Estate (3rd Project)
- 17 Pinthong Industrial Estate (4th Project)
- 18 Pinthong Industrial Estate (5th Project)
- 19 TFD (2nd Project)
- 20 Yamato Industries
- 21 Smart Park





# Promoted Zones For Targeted Industries

Declared as EEC promotional zone  
for targeted industries

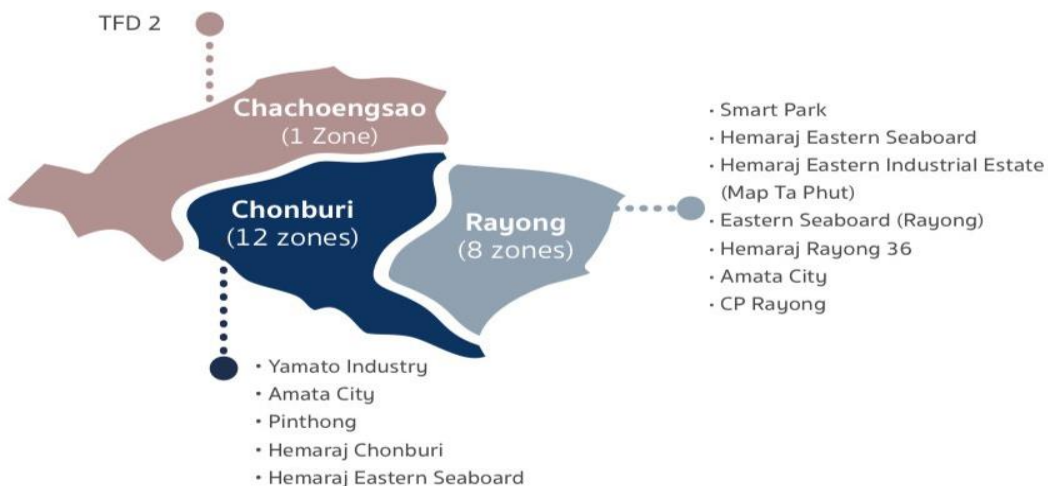
**21**  
zones

Area declared :  
**86,775 Rai**

Area to accommodate  
new investments :  
**28,666 Rai**

Investment value:  
**1.3**  
trillion Baht

Total of 31 industrial estates (113,000 Rai) in EEC



## EEC One Stop Service



Facilitates investments by simplifying the registration and licensing process. Reviewing the licensing process (Thailand's Smart & Simple License) in order to facilitate future business operations in line with the 8 following chapters :

1. Factory Law
2. Land Allocation Law
3. Land Excavation and Compaction Law
4. Building Contract Law
5. Machine Registration Law
6. Public Health Law
7. Immigration Law
8. Commercial Registration Law



EEC

EASTERN ECONOMIC CORRIDOR  
THE PRIME GATEWAY TO ASIA

# Development of **Special Technological Zones & EECi**





## Promoted Zones for Specific Industries

## Development of special technological zones



**EECi**

### Innovation Platform

An integrated innovation ecosystem to support investment in research and innovation and develop manpower in the targeted industries through the cooperation of the government, the private sector and educational institutions. The EECi is located on an area of over 3,000 Rai in Rayong.

The preparation of construction areas in the EECi (Phase 1) was started in February 2019 and was expected to be available for rent in 2021.



**EECd**

### EECd = Digital Park

The center of digital investment and digital manpower development, located on an area of over 700 Rai in Si Racha, Chonburi, will transform Thailand into a Digital Innovation Hub of ASEAN.

Request for Proposal in September 2019.



# EECi: A Translational Platform for Frontier Industries

Economic & Green Growth

TRL: 1 2 3 4 5 6 7 8 9

**TRL4.** Key elements validated in laboratory environment

**TRL5.** Key elements validated in relevant environment

**TRL7.** System prototype demonstration in an operational environment

**TRL8.** Actual system qualified through test and demonstration

**TRL9.** Actual system proven through successful mission operations

**Frontier Technology Development**

**Translational  
Research Platforms  
in EECi**

**Frontier Industry Development**

Local & Foreign  
Private Laboratories

Thailand Science Park /  
Regional Science Parks

Food Innopolis nodes /  
Space Krenovation Park

Research Univ./  
Research Institutes

Foreign Univ./  
Research Institutes

BIOPOLIS

ARIPOLIS

FOOD INNOPOLIS

SPACE INNOPOLIS

SYNCHROTRON

Demonstration

On-the-job Training

Transfer

Spin-off



Modern Agri. & Adv. Biotech



Bio-refinery



Battery & Modern Transports



Automation, Robotics &  
Smart Electronics



Aviation & Aerospace



Med. Devices & Supplies

Demonstration Plant Pilot Plant Standard Testing

Test Bed Living Lab Proving Ground Regulatory Sandbox



# A Platform Connecting Research & Investment Across Thailand



Northern  
Science Park  
(Chiang Mai)



Northeastern  
Science Park  
(Khon Kaen)



Thailand  
Science Park  
(Patum Thani)



Software Park  
Thailand  
(Nontha Buri)



Southern  
Science Park  
(Song Kla)



Research & Investment

Research & Investment

Research & Investment

EECi  
(Rayong)



Translational Research Hub

BOI has approved EECi incentive extension to cover EECi investment in all science parks, while EECi is under construction.



# EECi Overall Development & Zoning

## COMMUNITY ZONE



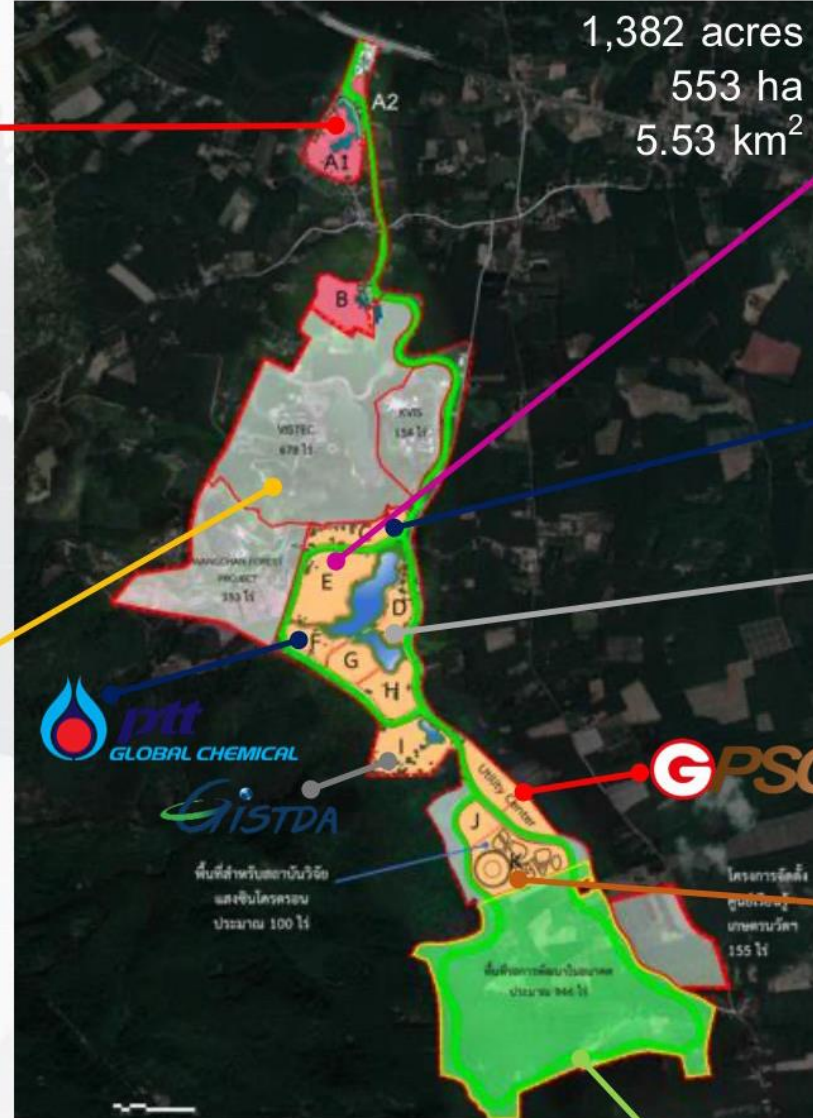
- Recreation Center (A1), Health Center (A1)
- Hotel (A1) Service Apartment (A1)
- Community Market (A2)
- Primary & Secondary Level: Inter. School (A1)

## EDUCATION ZONE



- High School Level: KVIS\*
- Graduate Level: VISTEC\*
- Wangchan Forest Learning Center\*
- Innovative Agriculture Center, Chitralada Technology Institute

\* Already in Operation with ~10 Billion THB investment to-date



## INNOVATION ZONE 1

\*\*Open by 2021

### EECi Phase IA\*\*



\*\*Groundbreaking Feb 2019

### PTT Art Gallery & Energy Museum



## INNOVATION ZONE 2 (Future)



# Construction Progress of EECi

Source: PTT PLC



 **WANGCHAN VALLEY**  
SMART NATURAL INNOVATION PLATFORM

72% complete as of February 2020

**EECi**  
EASTERN ECONOMIC CORRIDOR OF INNOVATION



EECi Headquarters  
(26% complete as of March 2020)



# EECi Platform & Ecosystem Development







EEC

EASTERN ECONOMIC CORRIDOR  
THE PRIME GATEWAY TO ASIA

# EECi : Eastern Economic Corridor of Innovation



# EECi Translational Infrastructures



A light gray world map is centered in the background of the slide, showing the continents of North America, South America, Europe, Africa, Asia, and Australia. The map is overlaid with a faint grid pattern.

# BIOPOLIS

## เมืองนวัตกรรมชีวภาพ

# Advanced Infrastructures Planned for EECi **BIOPOLIS**



**Phenomics Greenhouse**  
to study response of plants  
to environmental conditions



**Plant Factory**  
to produce plants  
in a controlled environment



**Modern Aquaculture  
Demonstration Facility**

**Biorefinery Pilot Plants**





# EECi Biorefinery Ecosystem

## 4 Joint Labs & Centers of Excellence (Research Work & Engineering Capability)



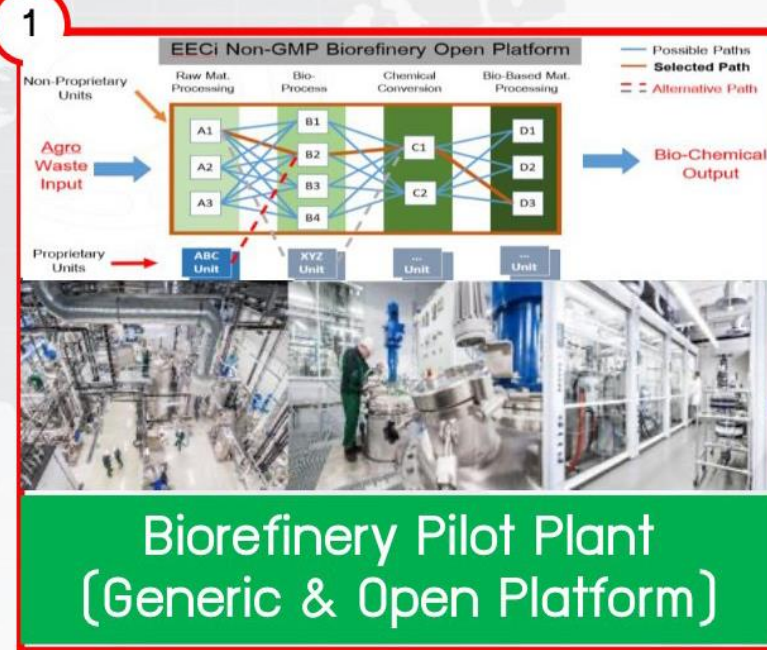
## 3 International Research Projects & Partnership



## 2 Professional Management



## 10 NQI for Biorefinery



## 9 Proprietary Tech. Providers

## 5 Human Resource Development



Scholarship for EECi



Career-for-the-Future Academy

## 6 Demand-Led Consortium



## 7 Domestics & International Users

## 8 R&I Funding & Market Jumpstart

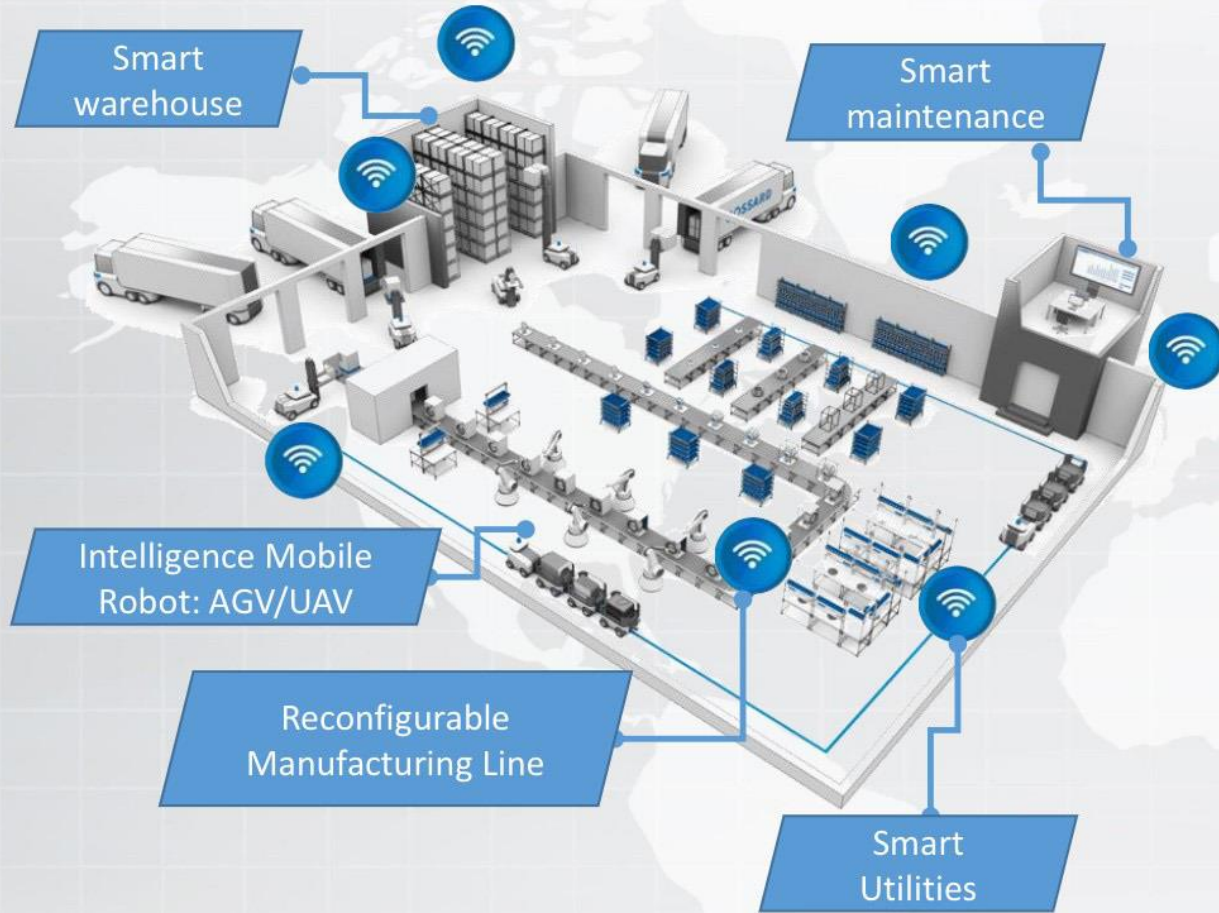
A light gray world map is centered in the background of the slide, showing the continents of North America, South America, Europe, Africa, Asia, and Australia.

# ARIPOLIS

เมืองนวัตกรรมหุ่นยนต์ ระบบอัตโนมัติ  
และอิเล็กทรอนิกส์อัจฉริยะ



# Advanced Infrastructures Planned for EECi **ARIPOLIS**



Demo Factory and I4.0 Testbed



Autonomous Vehicle  
Testing & Living Laboratory



GISTDA

CAAT  
The Civil Aviation Authority of Thailand  
NSTO

UAV  
Regulatory Sandbox



5G & Connected Vehicle



High Performance  
Computing

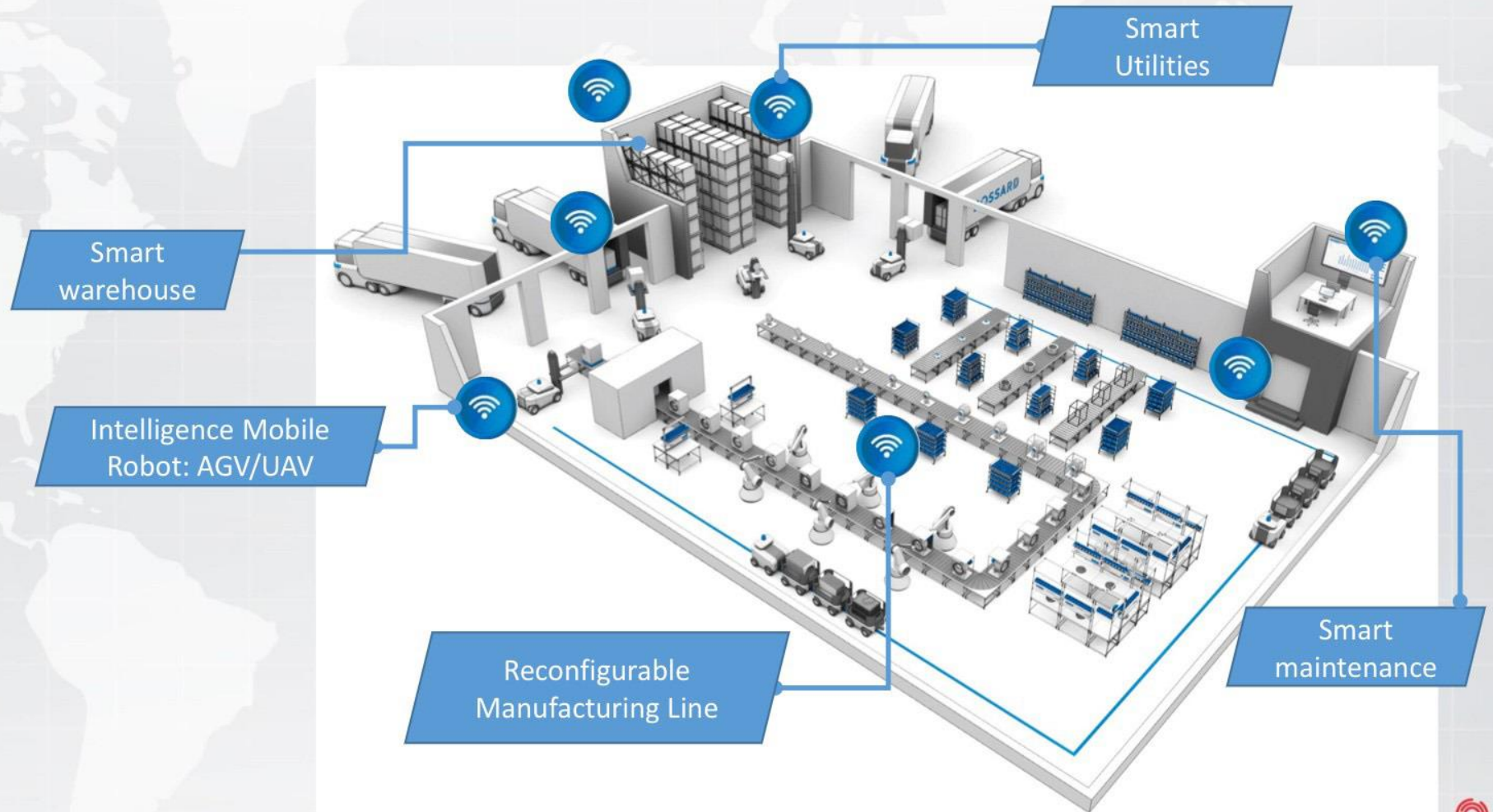


# Sustainable Manufacturing Center (SMC)

SMC serves “Demand Creation” and “Supply Capabilities” for Industry 4.0 Transformation

## Industry 4.0

- ✓ Show Case
- ✓ Test Bed
- ✓ Consultation
- ✓ HRD
- ✓ Market Place



Smart Factory

Smart Warehouse

Smart & Predictive  
Maintenance

Smart Energy  
& Utilities



# SMC Ecosystem Development

## Smart Industry Readiness Index

- 🌀 Pilot Projects in partnership with



## Founders & Anchor Firms



สภาอุตสาหกรรมแห่งประเทศไทย  
The Federation of Thai Industries



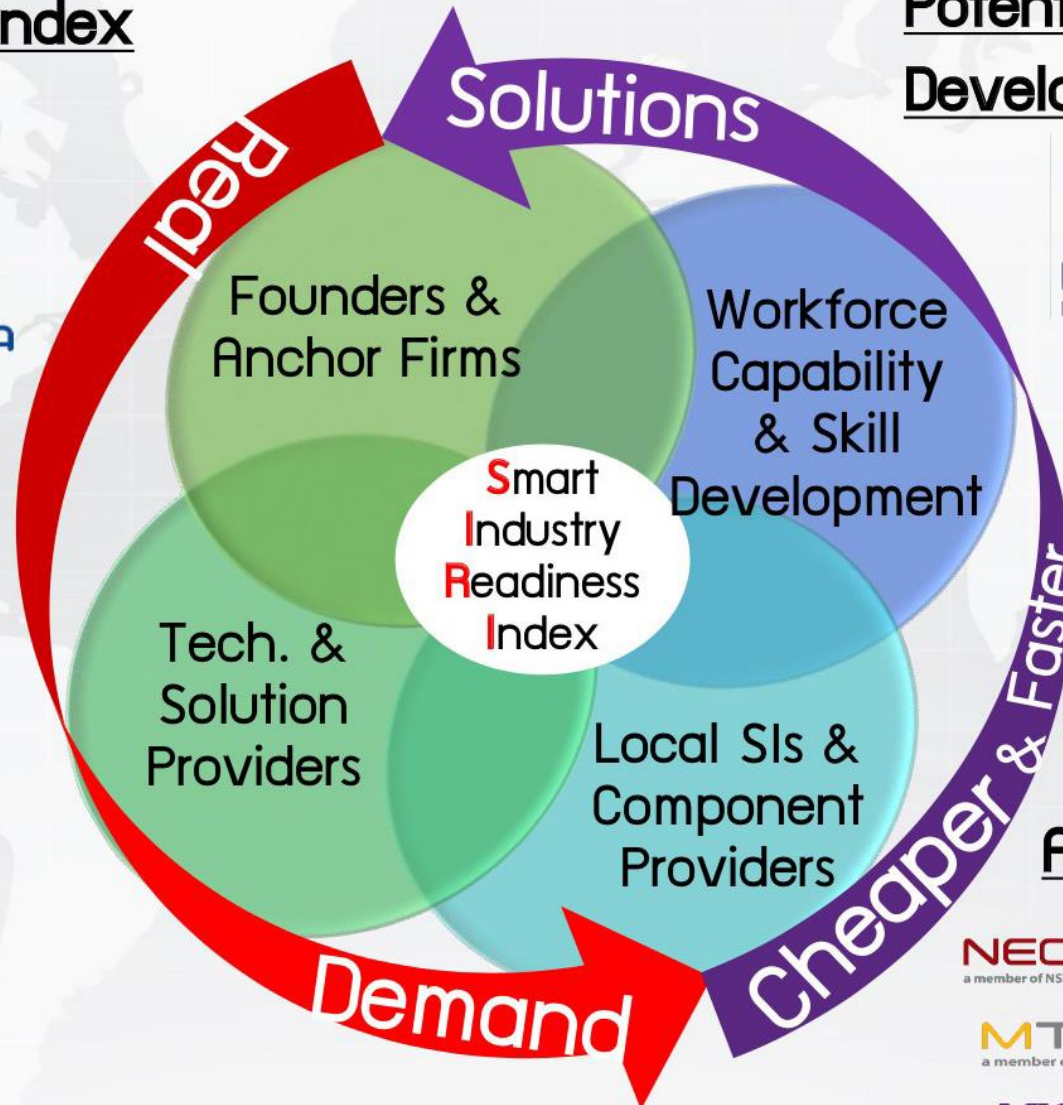
## Potential Skill & Capacity Development Platform



## Potential Sis & Component Providers



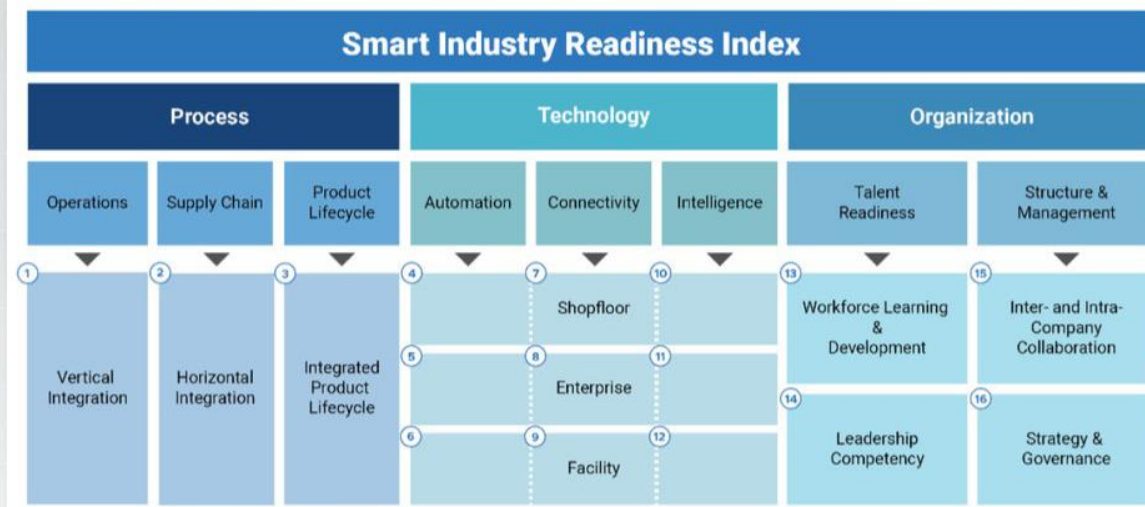
## Academics & Solution Providers



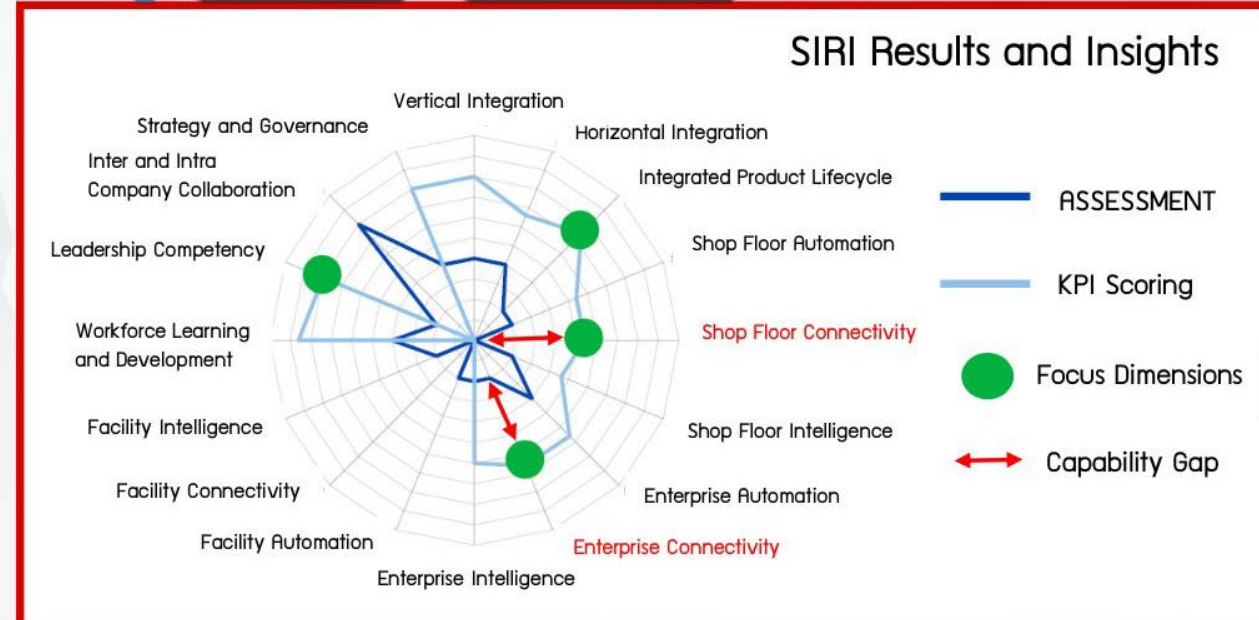


# Smart Industry Readiness Index or “SIRI” is a guideline for the company to walk through the I4.0 journey

SIRI = A **common language** among stakeholders in the ecosystem.

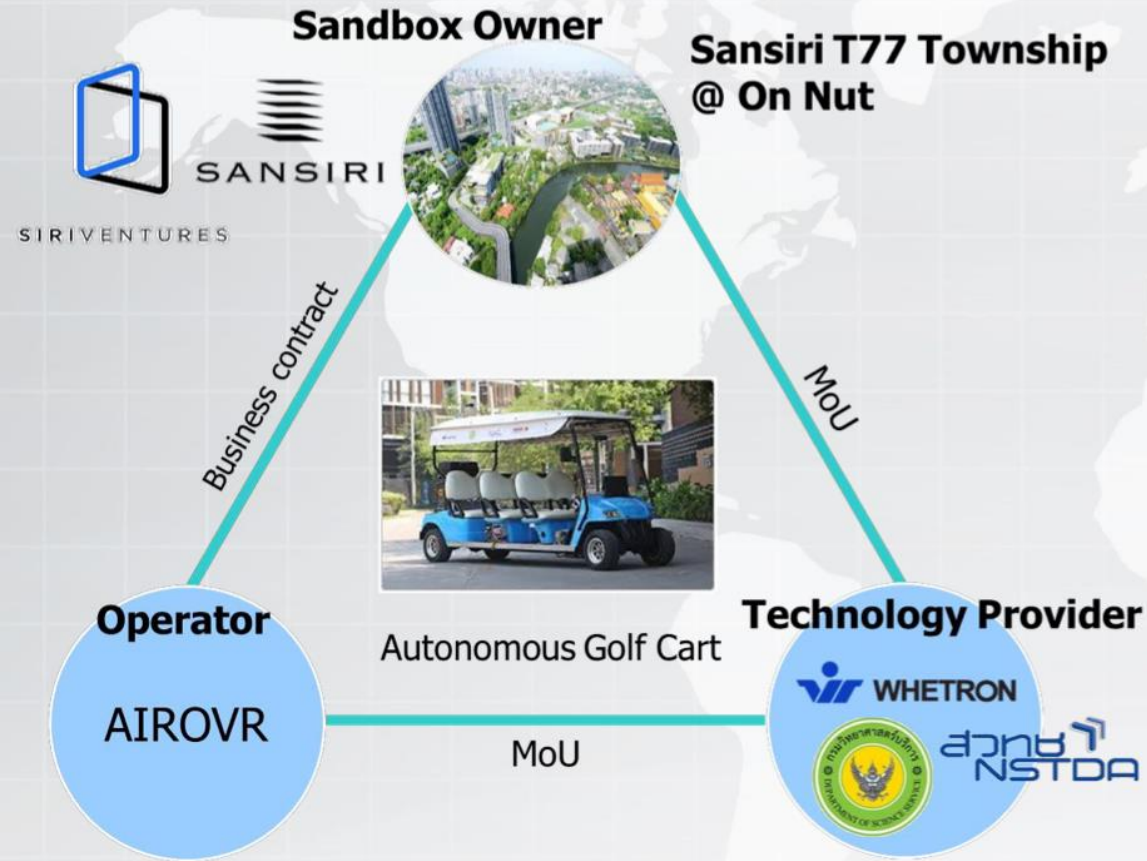


3 Building Blocks, 8 Pillars, 16 Dimensions





# Preliminary Project : Autonomous Golf Cart at T77 (Aug 19 – Jun 20)





# Workforce Training Contribution

## The Science and Technology Learning Promotion Project for schools in the Eastern Economic Corridor

- one-day camp, Kids University, Little Scientist house project
- auto-tech activities, NECTEC Embedded Technology Camp
- Electronic & IoT Camp, R Cheewa Hackathon
- Fablab, KidBright Project
- National Software Contest (NSC), Young Science Competition (YSC)

153 Scholarship from Ministry of Higher Education, Science, Research and Innovation for EECi

Attract 41 foreign researchers to collaborate with EECi plan

⊗ 158 Talented Youths

🔍 4,394 Primary/Secondary Students

💬 1,599 Vocational Students

🧠 1,036 Teachers





# Opportunities for Partnership

- ◎ Localization of **Advanced Technology for Thailand and ASEAN Market**
- ◎ Globalization of **Advanced Products** from Local Bio-resources
- ◎ Joint Research between **International Firm & Research Institutes with Local Counterparts**
- ◎ Shared use of **Advanced Translational Infrastructure** in EECi
- ◎ Joint Development of **Talents**
- ◎ Other Win-Win Partnering Arrangement!







# Privileges & Incentives



Translational  
R&D Infra.



Advanced  
National Quality  
Infrastructure  
(NQI)



Regulatory  
Sandbox



Smart Visa for  
international  
experts



Advanced  
Technology  
Development  
Through Open  
Innovation



13 years  
(maximum)  
corporate  
income tax  
exemption



17% flat rate  
personal income tax  
for international  
(and reverse brain  
drain) experts



Talent  
workforce

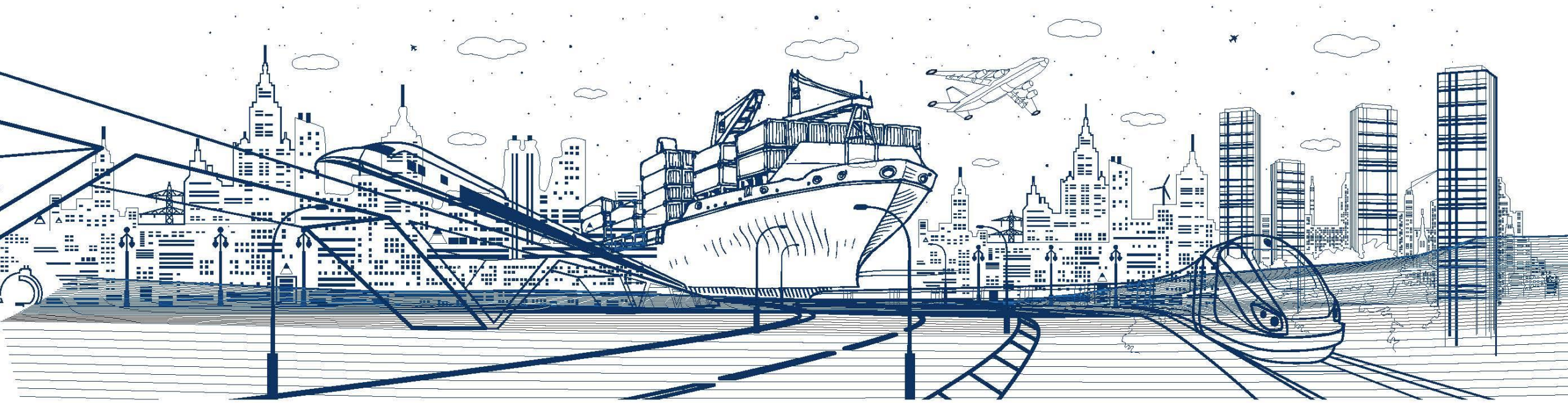




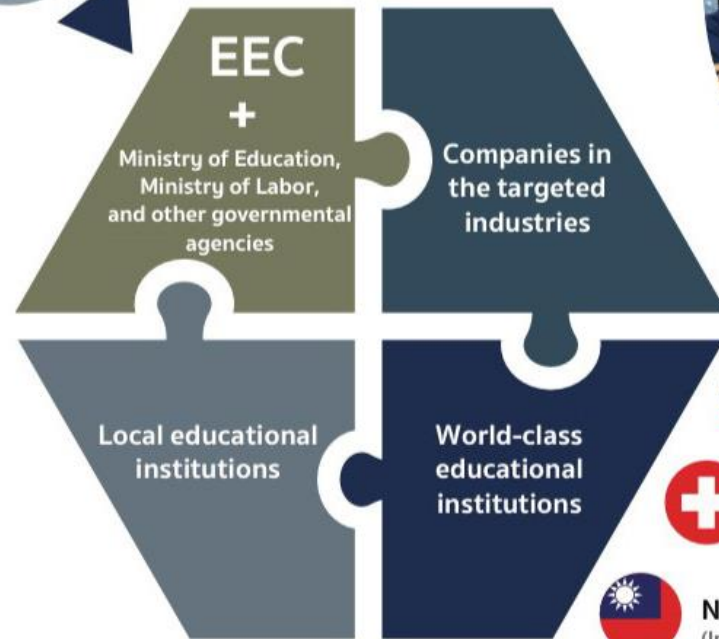
EEC

EASTERN ECONOMIC CORRIDOR  
THE PRIME GATEWAY TO ASIA

# Demand-driven Education Development



# Demand-driven education development



**Carnegie Mellon University, USA**  
(Information Technology and  
Computer Science)



**Les Roches Institution, Switzerland**  
(Hotel management)



**National Taiwan University**  
(Intelligent Manufacturing System Engineering)

Within the next 5 years,  
there will be **475,674**  
new jobs in the Eastern  
Economic Corridor.

- ▶ Vocational degree : 253,114 units
- ▶ Bachelor's degree : 213,943 units
- ▶ Master's degree or higher : 8,617 units

**7 Targeted Industries**  
**3 Infrastructure projects**

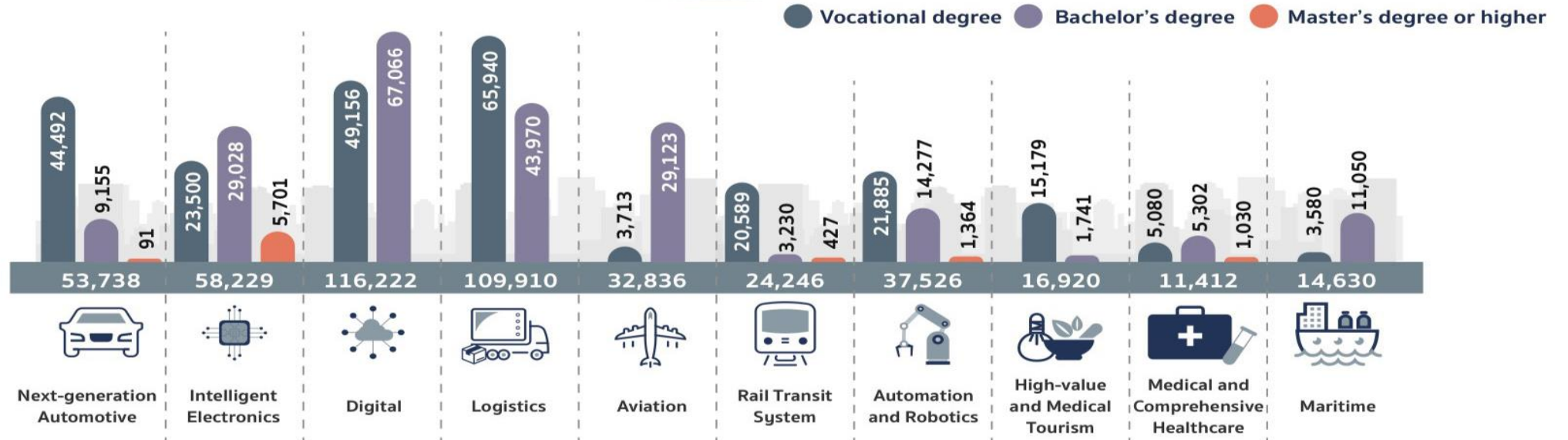
The top 3 industries with  
highest demand in workforce

1. Digital
2. Logistics
3. Intelligent Electronics



# Human resource demand

7 targeted industries, 3 infrastructure projects



Source : Eastern Economic Corridor (EEC)

## Divided by area



## Divided by education level



## Workforce skill development at every level to meet demands



### New Skill

Adjust the teaching strategies, train teaching personnel and improve teaching materials in order to produce skillful workforce that meet the needs of the industrial sector



### Up Skill

Improve workforce skills to keep pace with the new technology through practical training



### Re Skill

Set up 6-12 month short term trainings for people working in unrelated field, lacking direct experience, or unemployed

## Preparing for the needs of future workforce



### For students and teachers

- **Develop educational programs in various areas: Language, Science and Technology, and working skills for the 12 targeted industries :** Equipping youths with knowledge and abilities according to their talents through cooperation of vocational schools in the EEC area, Office of the Basic Education Commission (OBEC), National Science and Technology Development Agency (NSTDA), and Burapha University.
- **Drive the EEC model** through the cooperation of educational institutions, business firms, and professional organizations through Work-Integrated Learning (WIL).
- **Develop short course training program with business enterprises** such as Automation and Robotics, Aircraft Structural Repair, NDT, Maritime, Ground-based Aircraft Operations, Logistics, Aircraft Parts and Next-generation Automotive.
- **Establish the “EEC Automation Park”** to develop Automation and Robotics Learning Center at Burapha University, supported by private enterprises. The center is expected to be in operation by 2020 with a target of 10,000 participants per year
- **The Ministry of Education will establish 2 Kosen Institutes to produce innovators 4.0 for future industries :**  
The Thai Kosen Institute of King Mongkut's Institute of Technology Ladkrabang  
The Thai Kosen Institute of KMUTT



### For scientists, aircraft technicians, and digital technicians

- **Enhance the cooperation of research institutes, higher education institutions, industries in the EEC area, and international researchers.**
- **Organize training programs to improve knowledge and digital skills of workers and entrepreneurs.**
- **Develop innovators' skills through the collaboration between NSTDA and the private sector**
- **Establish the Aeronautical and Space Training Center (ASTC) in U-Tapao.**
- **Establish the digital personnel development institute to develop personnel working in Robotic AI and Data Science field.**





**EEC**

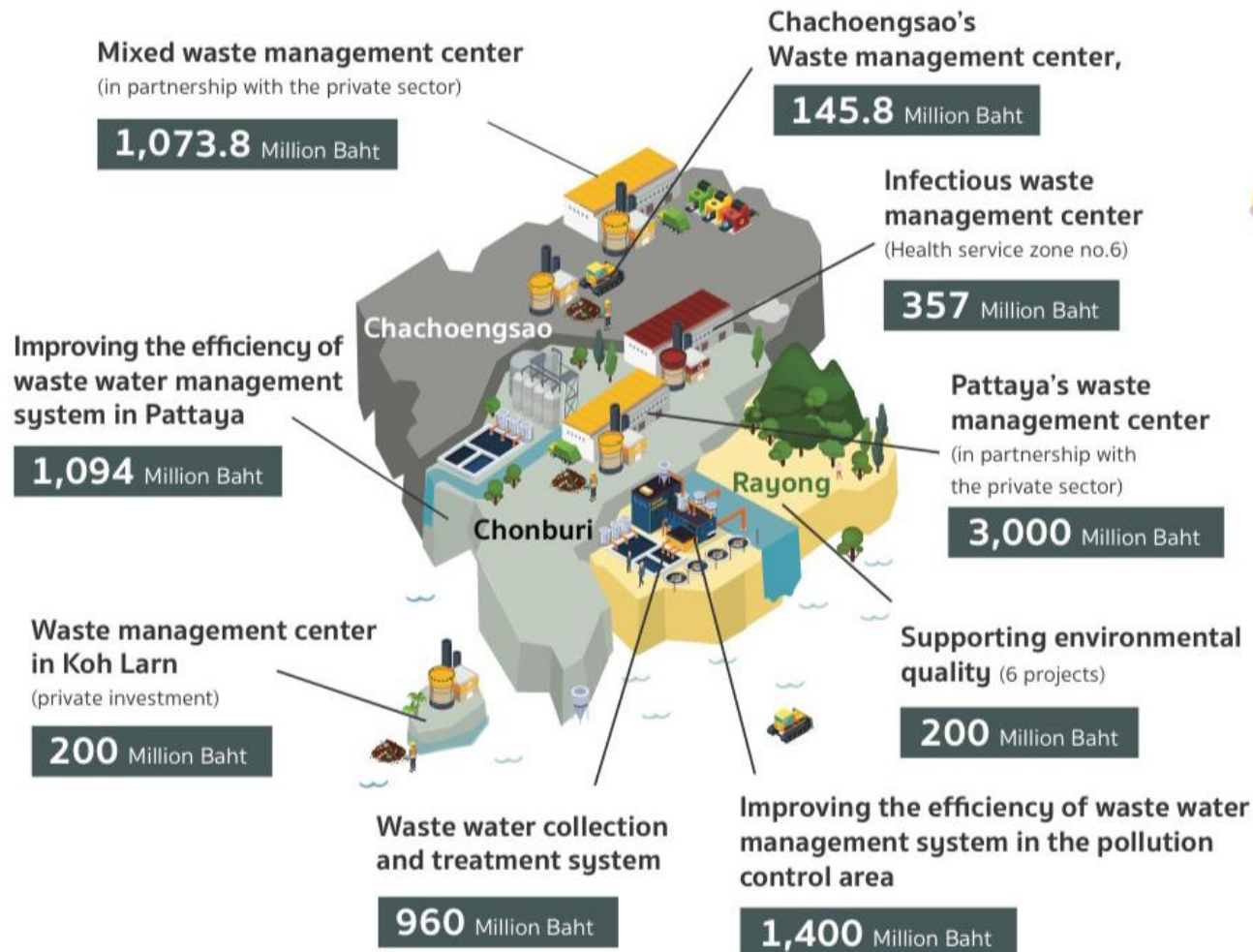
EASTERN ECONOMIC CORRIDOR  
THE PRIME GATEWAY TO ASIA

# **Environmental Development Plan And Circular Economy**



# Environmental development plan of EEC

Promote environment and community friendly  
development, building confidence, balance,  
and sustainability



**86 Projects**  
13,572 Million baht  
Government budget  
9,298.8 Million Baht

**14 Urgent projects**  
8,555 Million Baht

Government budget  
4,281.7 Million Baht  
Private  
4,273.8 Million Baht



## Smart City Development Plan



Projects	Location / Area size
1. Si Racha Creative District	Si Racha Chonburi /637 Rai (Life and Living Company)
2. Nihon-Machi	Si Racha Chonburi /715 Rai (Sahapat+Tokyu)
3. Laem Chabang Smart City	Laem Chabang City Council
4. Amata Smart City	Parnthong Chonburi /6,000 Rai (Amata Group)
5. Ban Chang Smart City	Ban Chang Rayong /1,883 Rai (Ban Chang City Council)
6. EEC Smart City	On going research
EECd	Laem Chabang Chonburi /830 Rai (CAT+DE)
EECi	Wangchan Rayong /3,455 Rai (PTT+NSTDA)



# Thailand's Investment Incentives | in Circular Economy

Incentives Corporate Income Tax (CIT) exemption: year	Activities	Sector
A1 (8 years / no limit)	Production of electricity from garbage or refuse derived fuel	Service and public utilities
A2 (8 years)	1. Manufacture of fuel from agricultural products, scrap, garbage*	Agriculture
	2. Manufacture of eco-friendly chemical polymers/products**	Biochemical
	3. Production of electricity from renewable energy (solar, wind and biomass)**	Service and public utilities
	4. Recycling and reuse of unwanted materials	
	5. Smart city development	
A3 (5 years)	1. Manufacture of biomass briquettes and pellets	Agriculture
	2. Industrial estate for environment protection	Service and public utilities
A4 (3 years)	4. Manufacture of products from agricultural by-products/agricultural waste	Agriculture
Section 8 (10 year/ no limit)	Targeted core technology development (Biotechnology, Nanotechnology, Advanced Material, Digital)	

Invest in EEC to receive more incentives

\* : +4 years CIT exemption (EECi) \*\* : +5 years 50% CIT reduction (Promoted Zone)



# The Eastern Economic Corridor development plan (draft)

Balanced land distribution  
and environmental conservation



- Exceptional agricultural area and conserved forest area
- Transforming less useful areas into usable areas of land

## Proportion of land use

Area	Original area (in Rai)	Readjusted area (in Rai)	Changes (in Rai)
City and commerce area	1,400,108.64	1,171,170.90	↓ 228,937.74
Promoted zones for specific industries	10,849.80	10,849.80	0
Industrial area	404,728.11	424,143.56	↑ 19,415.45
Agricultural area	5,089,419.02	4,802,336.10	↓ 287,082.92
Forest area	1,340,866.10	1,837,471.30	↑ 496,605.20
Military zone	99,817.24	99,817.24	0

## Percentage change

%
↓ 2.74
0
↑ 0.23
↓ 3.44
↑ 5.95
0

Expected to be completed in July 2019

## The development the Eastern Airport City



## • Development timeline

- First 5 years → 10 km radius around the airport
- 5 - 10 years → 30 km radius around the airport
- 10 - 15 years → 60 km radius around the airport

## • Connectivity : Bangkok-Rayong

- High - Speed Train: 30-35 minutes
- By road: less than 60 minutes



**EEC**

EASTERN ECONOMIC CORRIDOR  
THE PRIME GATEWAY TO ASIA

# Creating Awareness and Understanding of the EEC Project





**Creating awareness and  
understanding of the EEC project**



## Market Sounding and Public Hearing sessions for the EEC infrastructure projects



High-Speed Rail Linking 3 Airports



Map Ta Phut Industrial Port Phase 3



U-Tapao International Airport



Laem Chabang Port Phase 3



Digital Park (EECd)

\*Some examples of the activities



# Arranging over 50 community participation activities with more than 30,000 participants

Building an understanding of the EEC development and the Special Economic Promotional Zone. In addition, opinions from the local people in Nong Thinok Sub-district, Bharn Po district, Chachoengsao were heard and taken into consideration.



A seminar on "The preparation of the land use plan and the infrastructure and public utility system development plan of the 3 provinces"



A seminar on EEC progress for the local media in Chachoengsao to build an understanding of EEC and its future development



Meeting on ways to encourage cooperation between local administrators and EEC.



EEC-HDC Committee Meeting to define the vision and develop strategies for the education sector.



A seminar on "EEC and the eastern region area development" for silent power 11, focusing on the ICD project in Chachoengsao.



A seminar on EEC progress for the local media in Chachoengsao to build an understanding of EEC and its future development



A speech on the EEC Act during the "Economic Measures and Environment Tax for Green Businesses" seminar, held by Thammasat University and TRF



A seminar on the EEC Act for community leaders in Thapma, Rayong



Meeting with the Local Administrative Organization and community leaders in Tapong to formulate a sustainable development plan



A seminar on the EEC Act for the local media in Rayong to build an understanding of EEC and report current progress





# Building understanding for central agencies and educational institutions

A seminar on the Eastern Economic Corridor's working process :  
39<sup>th</sup> Senior Royal Thai Army Course



A meeting on the overall development of EEC, problem solving process,  
and promotion of the measure implementation in EEC area  
(Chonburi, Chachoengsao, Rayong).



A meeting on the EEC project implementation plan for  
the 12<sup>th</sup> Strategic Studies Center management team of the Strategist Program,  
National Defense Studies Institute, Royal Thai Armed Forces Headquarter.



\*Some examples of the activities

Meeting on the (draft)  
EEC development plan with an aim to receive feedback



Chachoengsao



Rayong



Chonburi

Scout Rally at the Vajiravudh Scout Camp in Si Racha, Chonburi.





# Communication and Public Relations

PR News/Scoop news/ Interviews/ News image	350 times
Press conference	24 times
Social media (EEC website/ EEC Facebook Page)	720 times
Domestic and international media relations	8 times
Videos to create a better understanding of EEC shared through social media such as Facebook and YouTube	Crisis management

**Total PR value of 320 million baht**



**Welcomed over 500 Japanese investors  
“Thailand-Japan Partnership towards  
Thailand 4.0 Future Together”**



**Welcomed over 500 Chinese  
investors “BRI and EEC :  
Connectivity for the future”**



**Roadshow to encourage investment  
from Japanese investors  
in the EEC area**



**Meeting on measures  
to promote EEC policies in  
an integrated manner**



**Press Conference about  
the EEC committee meeting**



**Seminar to encourage investment  
at the Hannover Messe 2019  
in Germany**



**Exhibition in Henan, China**



**Meeting domestic and international  
mass media to create a better  
understanding of EEC**

\*Some examples of the activities





EEC

EASTERN ECONOMIC CORRIDOR  
THE PRIME GATEWAY TO ASIA

# Partnership with Business Partners





# MOU between EEC and domestic and international agencies

## 1. Cooperation in trade and investment strategies at an international policy level



## 2. Cooperation in the promotion of business opportunities in EEC



## 3. Cooperation in education and human resource development



## 4. Cooperation in the promotion of innovation, businesses, and start-ups



collaborating with state - owned enterprises and private sectors

## 5. Cooperation in innovation, technology, and digital technology



## 6. Cooperation in comprehensive medical service



## 7. Cooperation in international E-Commerce and logistics system



## 8. Cooperation in electric vehicle investment projects



## 9. Cooperation in airport city development with the Henan government of China

China



Japan



# Japan - China investment cooperation in EEC



EEC

a case example of  
international cooperation  
of 3 countries.

13 September 2017

EEC, Thailand

EEC Connecting Thailand  
and Japan to the Future



9 May 2018  
Tokyo, Japan

MOU on Japan China  
Private Economic Cooperation  
in the Third Countries



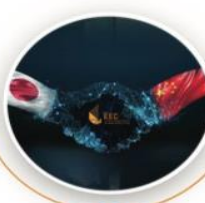
31 May 2018  
Bangkok, Thailand

1<sup>st</sup> JP-CN-EEC Forum



26 October 2018  
Beijing, China

1<sup>st</sup> Japan-China Third Country  
Market Cooperation Forum



2 April 2019  
Bangkok, Thailand

2<sup>nd</sup> JP-CN-EEC Forum  
Japan-China Workshop on  
Business Cooperation in Thailand



25 August 2018  
EEC, Thailand

Belt and Road Initiative and EEC  
Connectivity for the Future



Logistics



Energy and the Environment



Smart cities





**EEC**

EASTERN ECONOMIC CORRIDOR  
THE PRIME GATEWAY TO ASIA

# EEC & Regional Connectivity



# CLMV



Thailand

Cambodia

Laos

Myanmar

Vietnam





# ASEAN



Thailand

Cambodia

Laos

Myanmar

Vietnam

Indonesia

Malaysia

Singapore

Brunei

Philippine





# ASIA



	Thailand		Lebanon		Sri Lanka
	Cambodia		Syria		Tajikistan
	Laos		Israel		Pakistan
	Myanmar		Saudi Arabia		India
	Vietnam		Jordan		Butan
	Indonesia		Kuwait		North Korea
	Malaysia		UAE		Korea
	Singapore		Yemen		Mongolia
	Brunei		Oman		Bangladesh
	Philippine		Iran		Russia
	China		Afghanistan		Kazakhstan
	Japan		Maldives		Kyrgyzstan
	Uzbekistan		Turkmenistan		Armenia
	Bahrain		Qatar		Azerbaijan
	Cyprus		Egypt		Georgia
	East timor		Hong Kong		Macau

# World







# CHINA'S VISION: BELT ROAD INITIATIVE



# THAILAND FOR CLMVT & ACMECS CONNECTIVITY

## N-S Corridor

Kunming



Mohan



Vientiane



Nong Khai



Khon Kaen



EEC

## E-W Corridor (Lower)

Dawei



Kanchanaburi



Bangkok



EEC



Sa Kaew



Phnom Penh



Ho Chi Minh

## N-S Corridor (Upper)

Mawlamyine Myanmar



Mae Hong Son



Phitsanulok



Khon Kaen



Mukdahan-Savannakhet



Ho Chi Minh Vietnam





# EEC- CLMV Regional Connectivity

## 4. CLMVT Rail Connectivity Development

Phnom Penh – Poi Pet – Aranyaprathet – Bangkok – U-Tapao in EEC (potential extension)


## 5. Future extension to Southern Corridor

1. Expressway: Phnom Penh – Sihanoukville (190 km)  
• Construction start in 2020 ( by China)
2. Phnom Penh – Bavet – Ho Chi Minh Route  
(Saigon Hi Tech Park, Cat Lai Port, Vung Tao Port)

### Existing Infrastructure

-  Key Border Crossing
-  North-South Road
-  Southern Road
-  East-West Road
-  Railway
-  National Capital
-  City/Town
-  Provincial Boundary
-  International Boundary
-  Special Economic Zone (SEZ)
-  International Airport
-  Seaport
-  CBEZ
-  China Border Economic Zone
-  High-Speed Rail

### Future Infrastructure

-  Future Double-track Railway
-  Future Cross-border Railway

\*Boundaries are not necessarily authoritative.

As of February 2020



## 1. China's rail network connecting CLMVT Kunming – 3 China Border Economic Zones (CBEZs)

1. CBEZ bordering Laos PDR:  
Kunming – Laos PDR border – Mohan – Boten – Vientiane – Thailand – Nong Khai province  
• Start operation in 2021-2022 (Duration: 4 hours)
2. CBEZ bordering Myanmar:  
Kunming – Ruili  
• Start full operation in 2022  
(Proposed: Highspeed railway construction)
3. CBEZ bordering Vietnam:  
Kunming – Hekou  
• Operating since 2014

## 2. Road/Expressway from Kunming to CLMVT (Some are already in use)

1. Expressway: Kunming – Mohan – Boten  
• Future extension in 2020 to Thailand: Boten – Huay Xai  
(more convenient than R3A route)
2. Expressway: Vientiane – Vang Vieng  
• Construction started since 2018 by China  
• Future extension in 2020 : Vang Vieng - Mohan  
\*The two expressways will be operated in the same period as China - Laos PDR railway in 2021
3. Road: Kunming – CBEZ  
• Vietnam border – Hanoi – Hai Phong – Nanning  
(2 routes: Coastal route + Direct route to Hanoi International Airport)
4. Road: Kunming – Jing Hong – Mohan – Boten – Huay Xai – Chiang Khong – Chiang Rai route or Mohan – Boten – Vientiane – Nong Khai
5. Road: Kunming – Ruili - Myanmar

## 3. Existing Roadway through Thailand

1. Route R9:  
Mawlamyine – Myawaddy – Mae Sot – Phitsanulok – Khon Kaen – Mukdahan – Savannakhet – Hue – Da Nang
2. Route R12:  
Nakhon Phanom – Khammouane – Vinh – Hanoi – Guangxi
3. Route R3A:  
Boten – Houayxay – Chiang Khong
4. Route R8:  
Bueng Kan – Paksan – Vinh – Hanoi – Guangxi



สิทธิประโยชน์

# ตามมาตรา EEC



สำหรับโครงการที่ตั้งในจังหวัด  
ฉะเชิงเทรา ชลบุรี และระยอง



ตั้งแต่ 2 มกราคม 2563 ถึง  
วันทำการสุดท้ายของปี 2564

สิทธิครอบคลุมเหลือ เพื่อให้ครอบคลุม SMEs  
ที่ไม่อยู่ในนิคม แต่มีการพัฒนาบุคลากร

สิทธิตรงครอบคลุมแดง คือ  
ถ้าตั้งในนิคมที่จัดกับ BOI กับ กนอ.

สำหรับทุกพื้นที่  
ทั้งในและนอกนิคม หรือเขตอุตสาหกรรม

สิทธิเพิ่มเติม ตามพื้นที่เฉพาะ



กลุ่มกิจการพัฒนา  
เทคโนโลยี (หมวด 8)



สิทธิเพิ่มเติม

กรณีมีการพัฒนาบุคลากร



สิทธิพื้นฐาน

ยกเว้น CIT : 10 ปี

ยกเว้น CIT

2 ปี



สิทธิเพิ่มเติม กรณีที่ตั้งใน

EECi , EECa, EECd และ EECmd

นิคม หรือเขตอุตสาหกรรม

ยกเว้น CIT

1 ปี

หรือ

ยกเว้น CIT

1 ปี



กลุ่มกิจการ  
ฐานความรู้ (A1,A2)



สิทธิเพิ่มเติม

กรณีมีการพัฒนาบุคลากร



สิทธิพื้นฐาน

ยกเว้น CIT : 8 ปี

ลดหย่อน CIT 50%

3 ปี



สิทธิเพิ่มเติม กรณีที่ตั้งใน

EECi , EECa, EECd และ EECmd

นิคม หรือเขตอุตสาหกรรม

ลดหย่อน CIT 50%

2 ปี

ไม่ได้รับสิทธิ



กลุ่มกิจการ  
ที่ใช้เทคโนโลยี (A3)



สิทธิเพิ่มเติม

กรณีมีการพัฒนาบุคลากร



สิทธิพื้นฐาน

ยกเว้น CIT : 5 ปี

ลดหย่อน CIT 50%

3 ปี



สิทธิเพิ่มเติม กรณีที่ตั้งใน

EECi , EECa, EECd และ EECmd

นิคม หรือเขตอุตสาหกรรม

ลดหย่อน CIT 50%

2 ปี

หรือ

ยกเว้น CIT

1 ปี



ท่านสามารถศึกษารายละเอียดของกิจการแต่ละประเภทได้จากคู่มือการขอรับการส่งเสริมการลงทุน  
ดาวน์โหลดได้จาก <https://www.boi.go.th/un/guides> หรือ สแกน QR CODE

